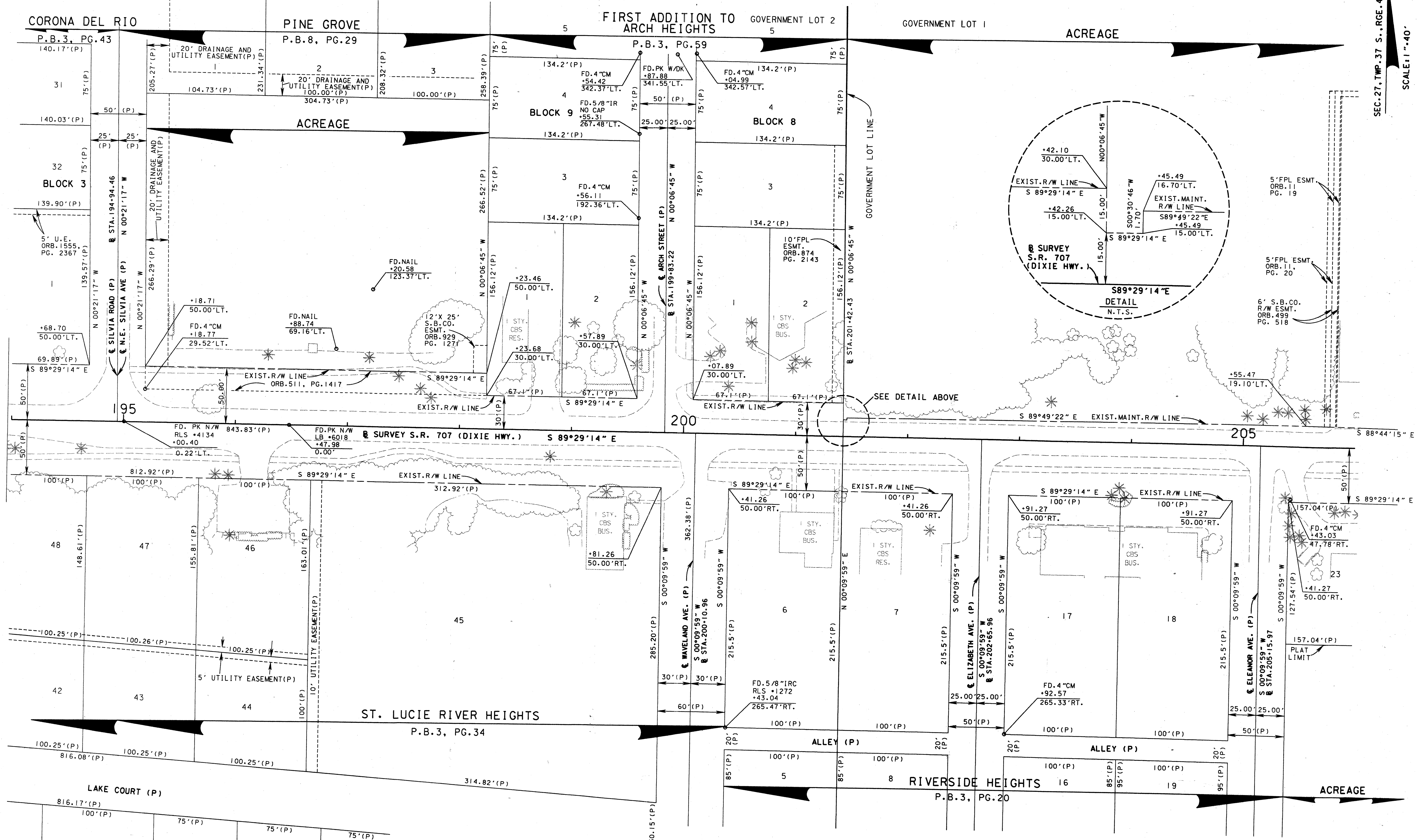


UNINCORPORATED MARTIN COUNTY

SEC. 27, TWP. 37 S., RGE. 41 E.
SCALE 1" = 40'



UNINCORPORATED MARTIN COUNTY

SEE SHEET 1 FOR LEGEND AND GENERAL NOTES

STATE ROAD 707 (DIXIE HWY.) FROM SAVANNAH ROAD TO ARCH STREET

MAINTENANCE MAP

FLORIDA DEPARTMENT OF TRANSPORTATION
RIGHT OF WAY MAPPING

APPROVED BY: *J. Smith* DATE: 5/12/03
DISTRICT RIGHT OF WAY SURVEYOR

REVISION	BY	DATE	REVISION	BY	DATE

BY: L. CEFOLIA DATE: 8/17/01
 PRELIM L. CEFOLIA 8/17/01
 FINAL L. CEFOLIA 4/03/03
 CHECKED J. EDGAR 4/07/03

FED. PROJ. NO. N/A SECTION 89030-MAINT.(4)
 STATE ROAD 707 (DIXIE HWY.) MARTIN COUNTY
 MAPS PREPARED BY LB-696 KIMLEY-HORN AND ASSOCIATES
 FIELD BOOK NO.'S SEE SHEET 1
 W.P.I. No. N/A SCALE: 1" = 40'
 ITEM/SEGMENT NO. 4035911 SHEET 10 OF 12